



SCHOOL OF NURSING
UNIVERSITY *of* WASHINGTON

Dementia Care

My experience in the United States and Sweden



**Karolinska
Institutet**

Agenda



Background **3**

The Cultural Significance of Aging **4**

The Care of Patients with Dementia in Each Culture **5**

Nursing's Role in Caring for Patients with Dementia **6**

Challenges Facing Dementia Care Nursing in the Next 10 Years **7**

Summary **8**

Some Photos **9-11**

Background

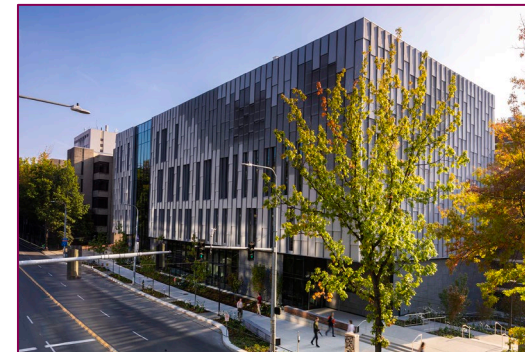
Transitional Care Center of Seattle & Horizon House

- ❑ Transitional Care Center of Seattle
 - Skilled nursing facility, Medicare/Medicaid
 - Accompanied nurses, CNAs and care managers
- ❑ Horizon House
 - Privately funded retirement community
 - Guided tour



University of Washington School of Nursing

- ❑ Attended occasional classes at the nursing program at UW
 - Educational modules about dementia care
- ❑ Weekly discussions with Dr. Christina Coulter
 - Reflections about dementia and healthcare



The Cultural Significance of Aging

US more focused on independence and family

❑ Perception of Elderly Independence:

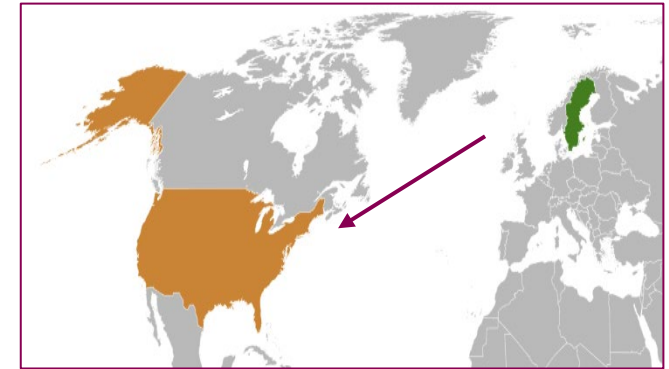
- USA: There's a strong value placed on independence and self-reliance. Elderly care is often seen as a shared familial responsibility.
- Sweden: Stronger societal emphasis on maintaining independence through public support. Elderly care is often seen as a shared societal responsibility.



Sweden has a more inclusive view on aging

❑ Youth-Centric vs. Inclusive Societies:

- USA: American culture is often considered youth-centric. Aging can be seen as a decline from the cultural ideal.
- Sweden: Aging is often viewed more positively. Emphasis on the wisdom and experience.



The Care of Patients with Dementia in Each Culture

Sweden – One Clear Path – Similar Outcomes

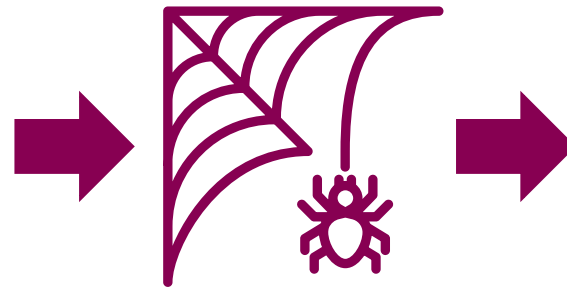
- Most of the care provided by formal supports
- Based on the need of care
- Independent, Home Care, Assisted Living
- Most are driven and funded by the local municipality



- ✓ Similar standard
- ✓ Affordable for everyone
- ✓ Decent care for the majority

USA – Many Smaller Paths – Many Outcomes

- Most of the care provided by informal supports
- Based on several factors
- The amount of money influences the resources



- ✓ Different standards
- ✓ Various outcomes
- ✓ The best care for some people

Nursing's Role in Caring for Patients with Dementia

Dementia Care

- ❑ Core of nursing care:
 - Holistic approach and focus on environment
 - Identify care needs and cherish the persons resources
 - Including loved ones and cultural competence
- ❑ Differences:
 - Care partner and care partner needs
 - Health-related social needs



The Nurse in Dementia Care

- ❑ Nurse's role:
 - Similar core responsibilities
 - Holistic and comprehensive approach
- ❑ Differences:
 - Several nursing roles in care settings in the USA
 - More responsibility from the nurse is delegated to CNAs in Sweden



Challenges Facing Dementia Care Nursing in the Coming Years

Problem

- ❑ Aging population
 - Leads to more people with dementia
- ❑ Increasing frequency of dementia
 - Larger fraction of elders each year
- ❑ Workforce shortages
 - There is a shortage of staff and a lack of interest

Part of the Solution

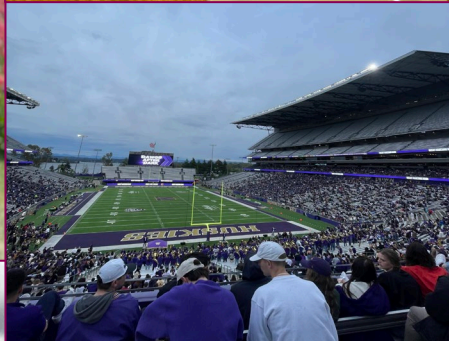
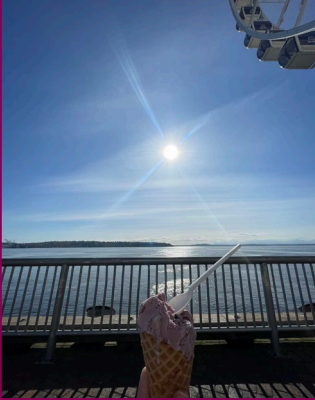
- ❑ USA
 - Reduce stigma around dementia
 - More focus on introducing people to the subject
- ❑ Sweden
 - Reduce stigma around dementia
 - Offer people better working conditions
- To improve care:
 - USA – Better public support structure
 - Sweden – Better family support structure

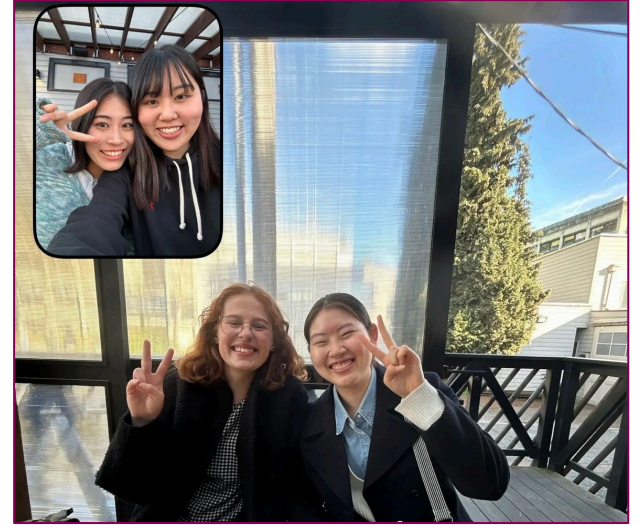


Summary

- ❑ Differences and similarities between Sweden and the US
- ❑ The cultural beliefs affects values in care
- ❑ Different healthcare systems gives different outcomes
- ❑ New experiences, knowledge and perspectives









SCHOOL OF NURSING
UNIVERSITY of WASHINGTON



Thank you!



Karolinska
Institutet